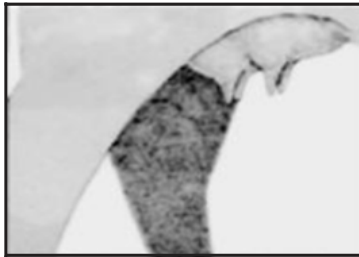


# UDDER & TEAT SCORES

**Udder and Teat Scores** should be collected within 24 hours of calving. Two scores are assigned based on udder suspension (1–9; with 9 being very tight and 1 being very pendulous) and teat size (1–9 with 9 being very small and 1 being large and misshapen). Ideally one person scores all the udders/teats during the calving season for consistency.

## SUSPENSION



9 - very tight, level



7 - tight, fairly level



5 - moderately tight



3 - pendulous, broken floor



1 - very pendulous, broken floor

## TEAT SIZE



9 - very small



7 - small



5 - intermediate



3 - large



1 - very large, balloon shape